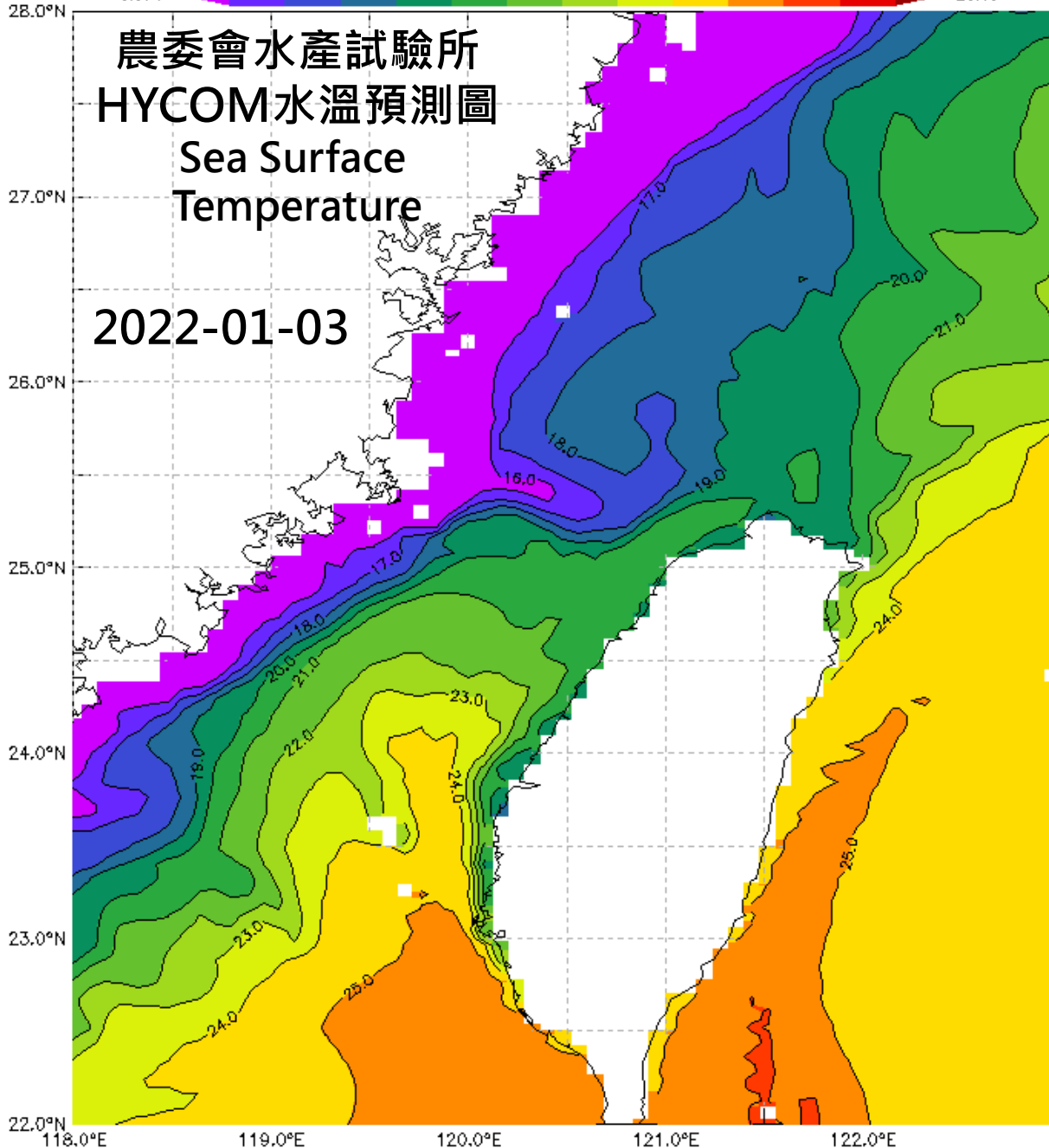


16 17 18 19 20 21 22 23 24 25 26 27 28

8.874

26.13

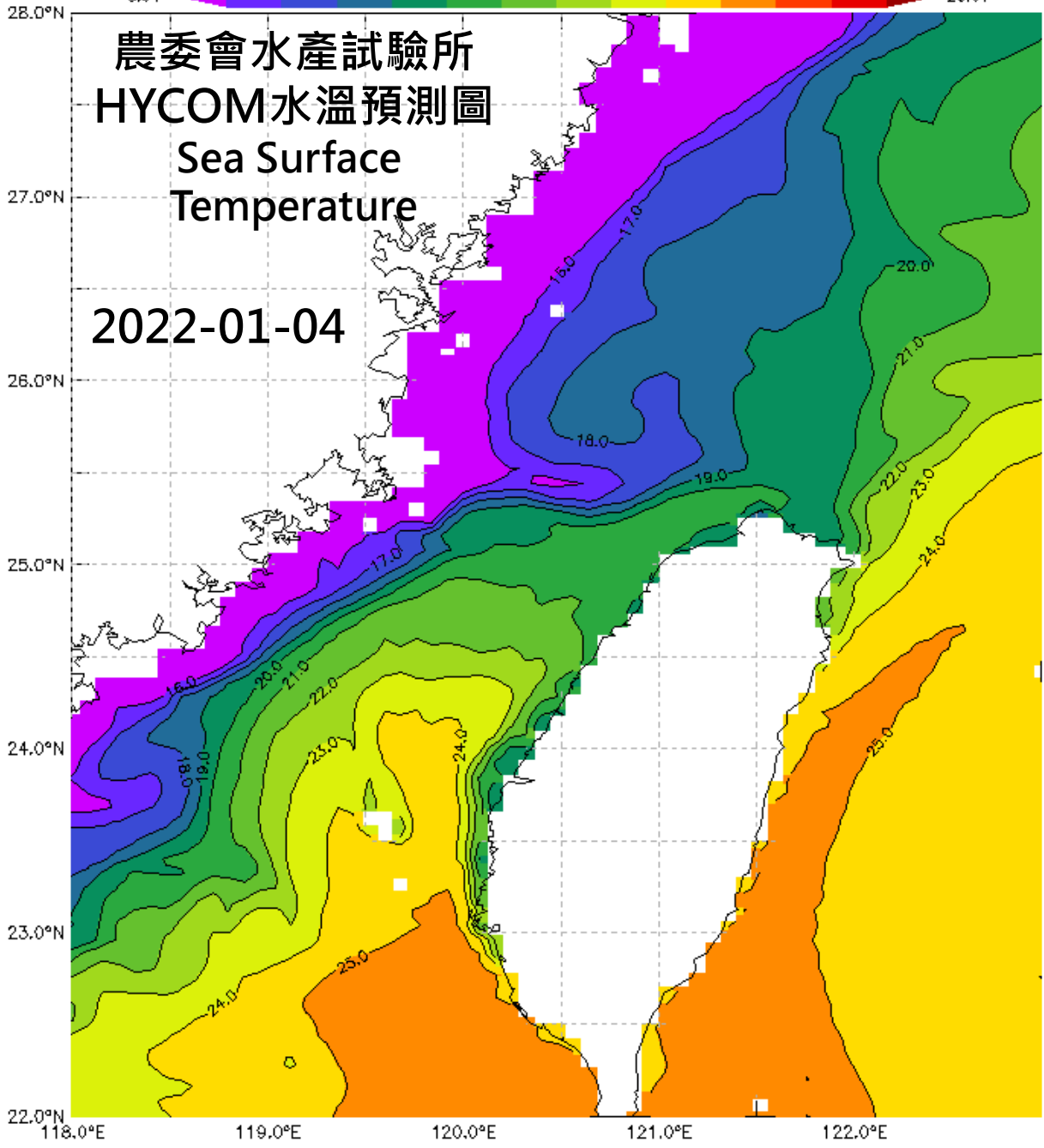


16 17 18 19 20 21 22 23 24 25 26 27 28



農委會水產試驗所  
HYCOM水溫預測圖  
Sea Surface  
Temperature

2022-01-04



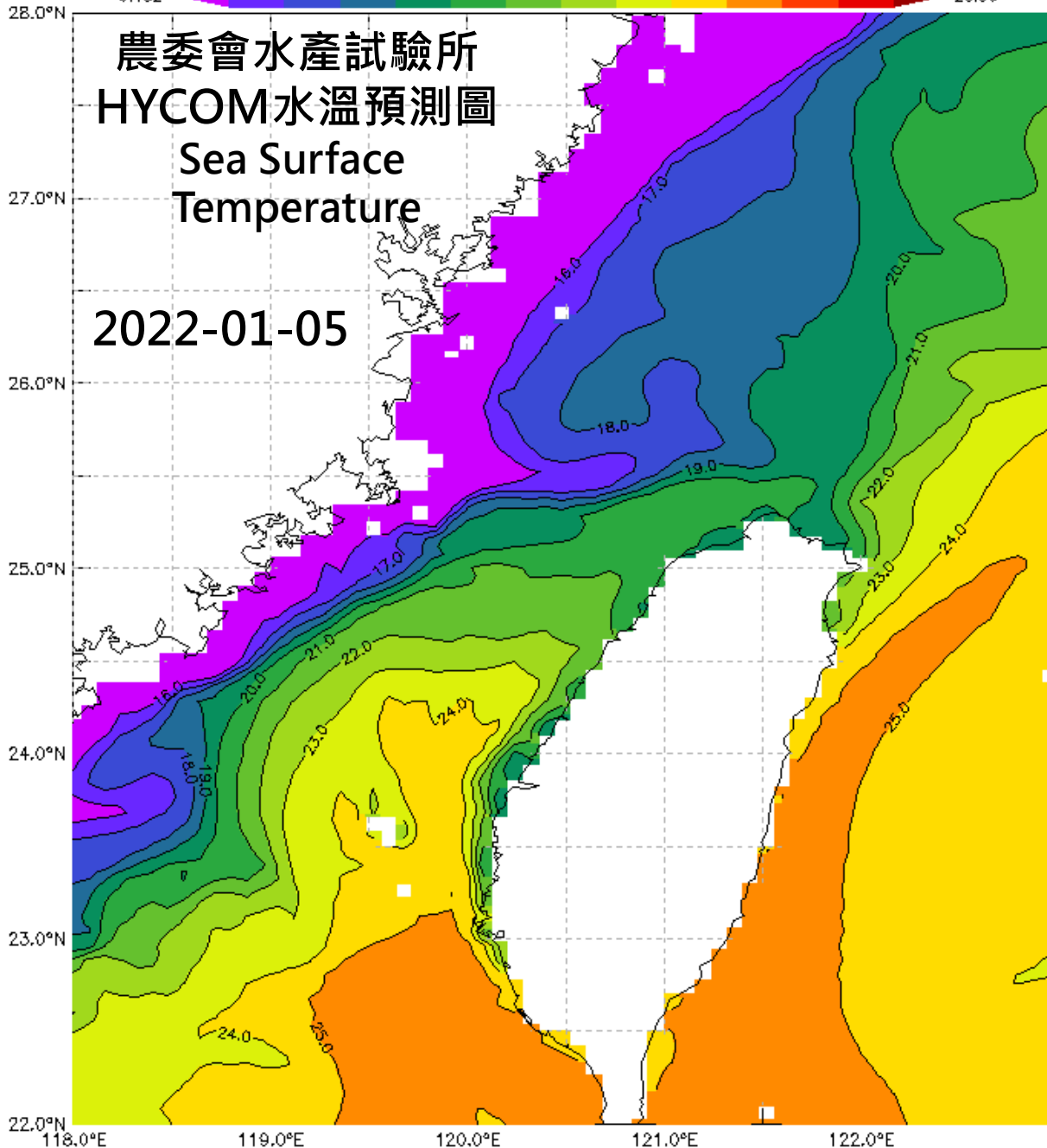
16 17 18 19 20 21 22 23 24 25 26 27 28

9.152

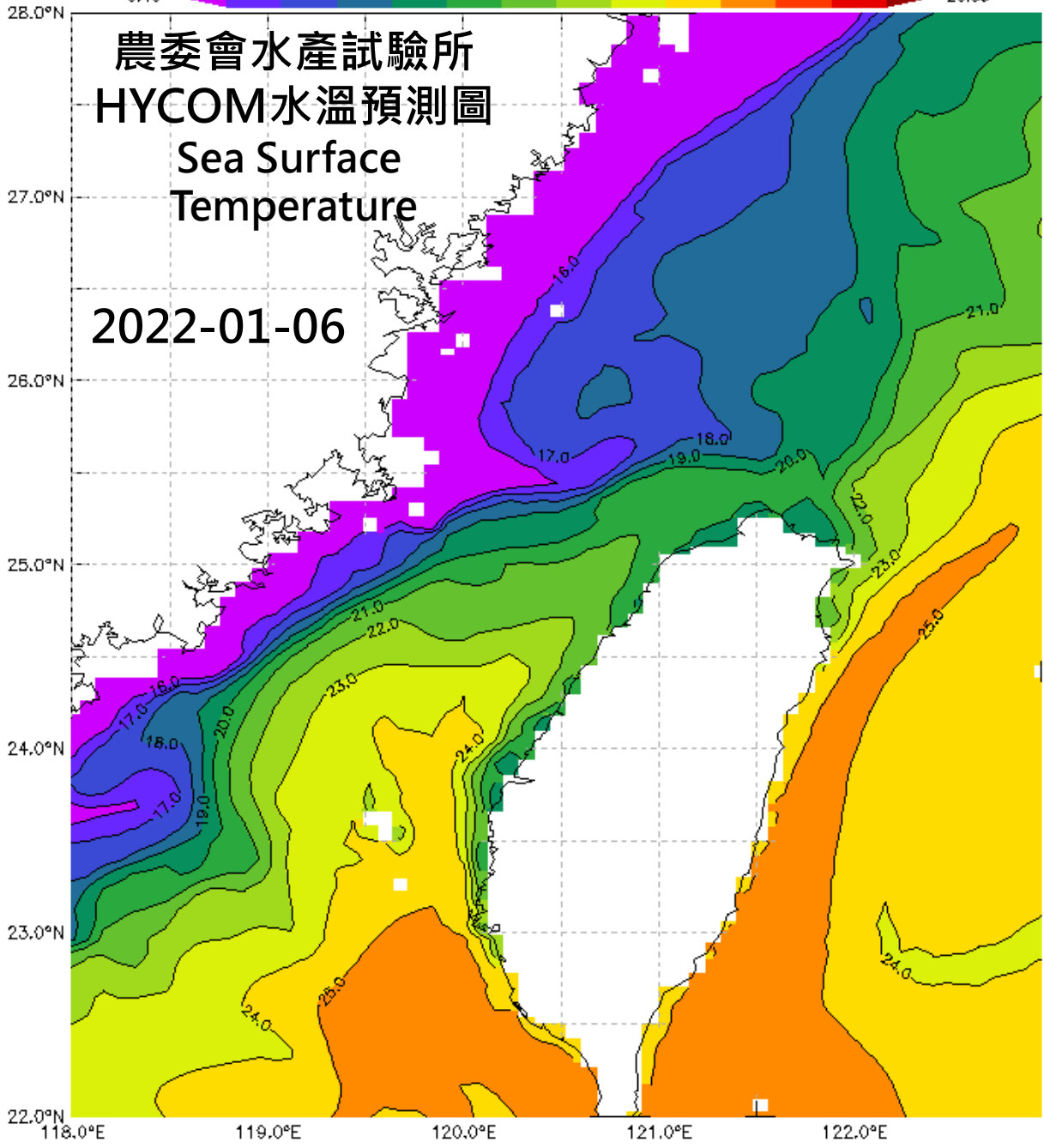
25.96

農委會水產試驗所  
HYCOM水溫預測圖  
Sea Surface  
Temperature

2022-01-05



16 17 18 19 20 21 22 23 24 25 26 27 28

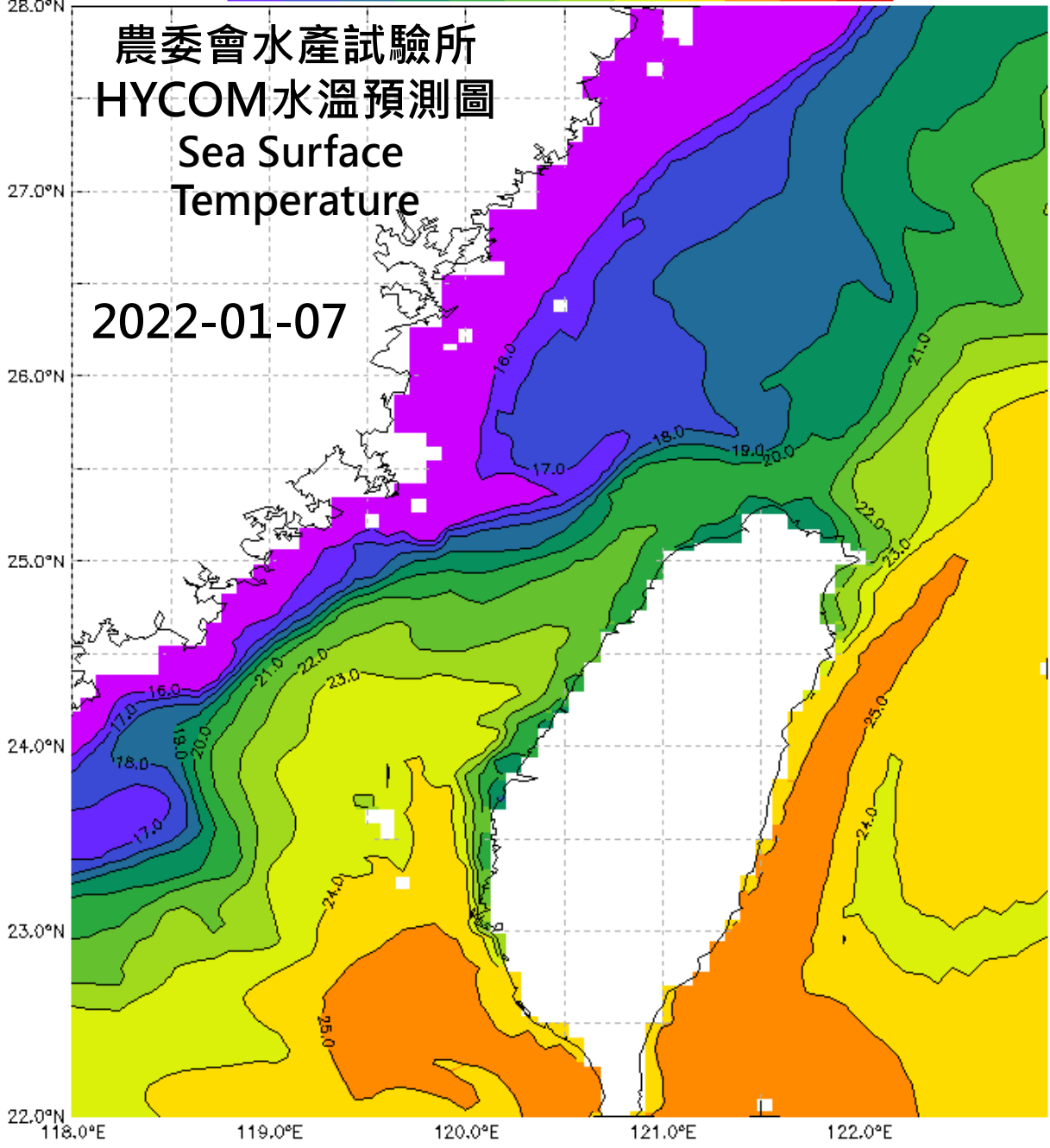


農委會水產試驗所  
HYCOM水溫預測圖  
Sea Surface  
Temperature

2022-01-06

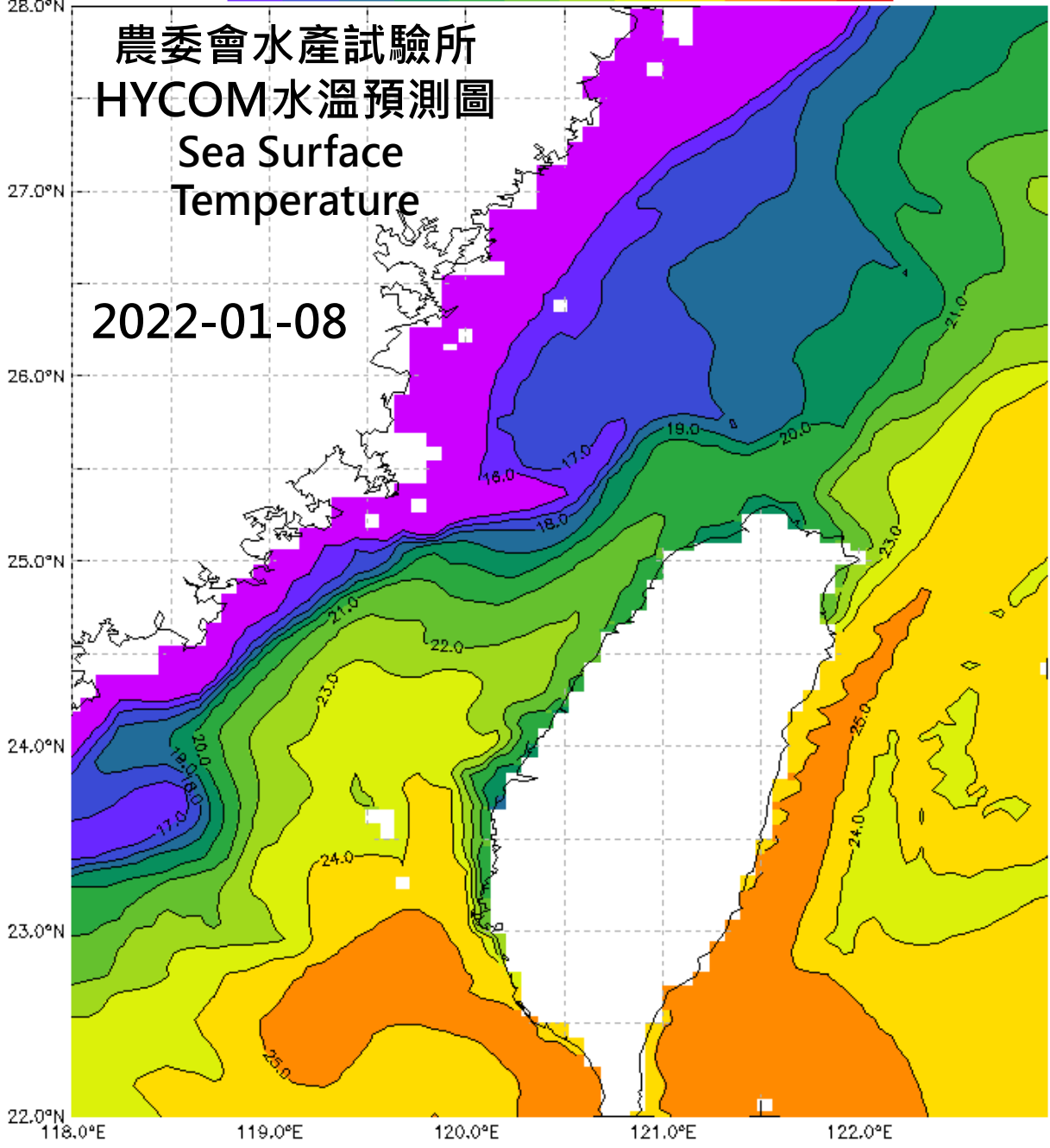
16 17 18 19 20 21 22 23 24 25 26 27 28

9.544 25.71



HYCOM-水溫模式預測圖 2022-01-04製作發布

16 17 18 19 20 21 22 23 24 25 26 27 28

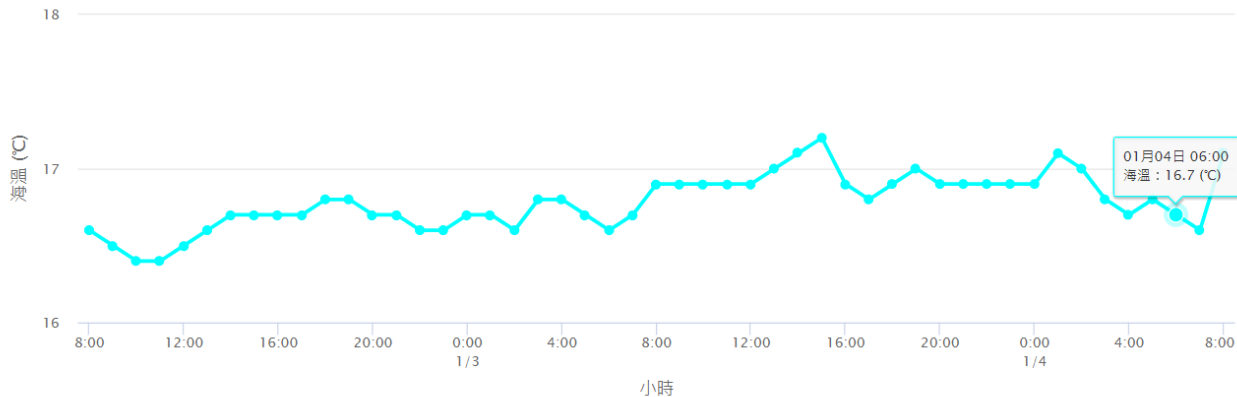


農委會水產試驗所  
HYCOM水溫預測圖  
Sea Surface  
Temperature

2022-01-08

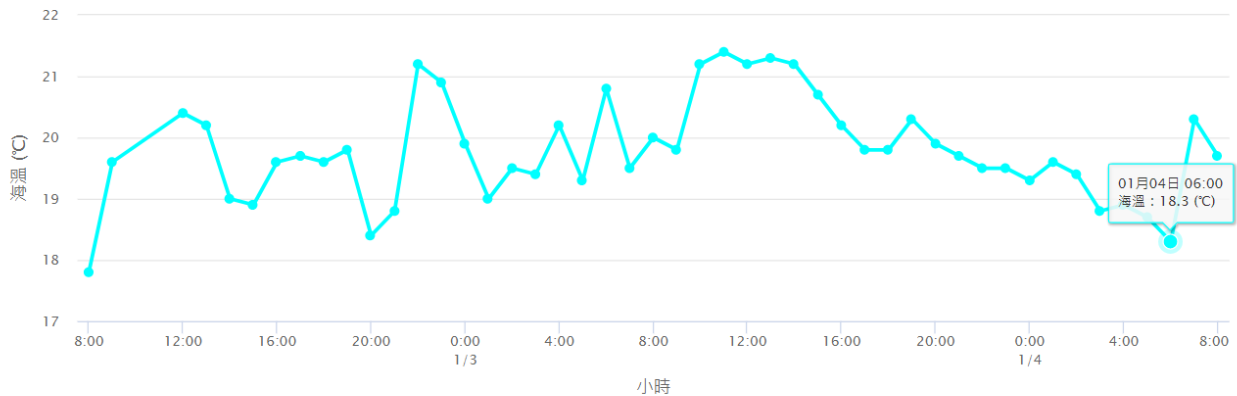
### 馬祖資料浮標海溫

2022-01-02 08:00 ~ 2022-01-04 08:00



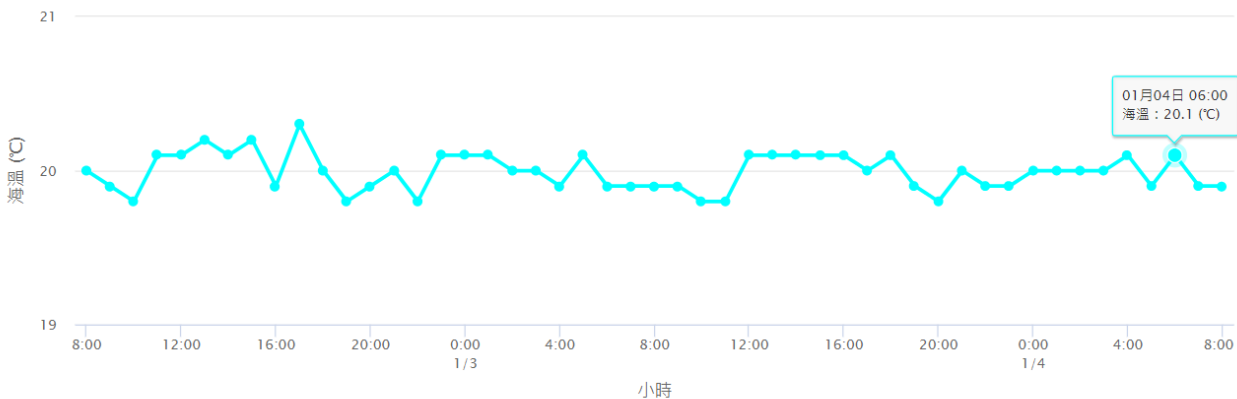
### 彭佳嶼資料浮標海溫

2022-01-02 08:00 ~ 2022-01-04 08:00



### 富貴角資料浮標海溫

2022-01-02 08:00 ~ 2022-01-04 08:00

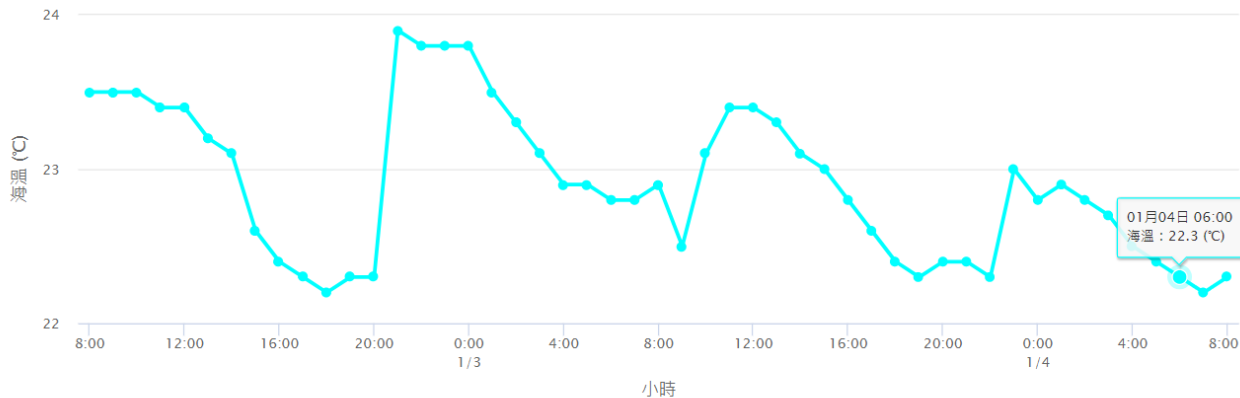


中央氣象局 製作

中央氣象局 製作

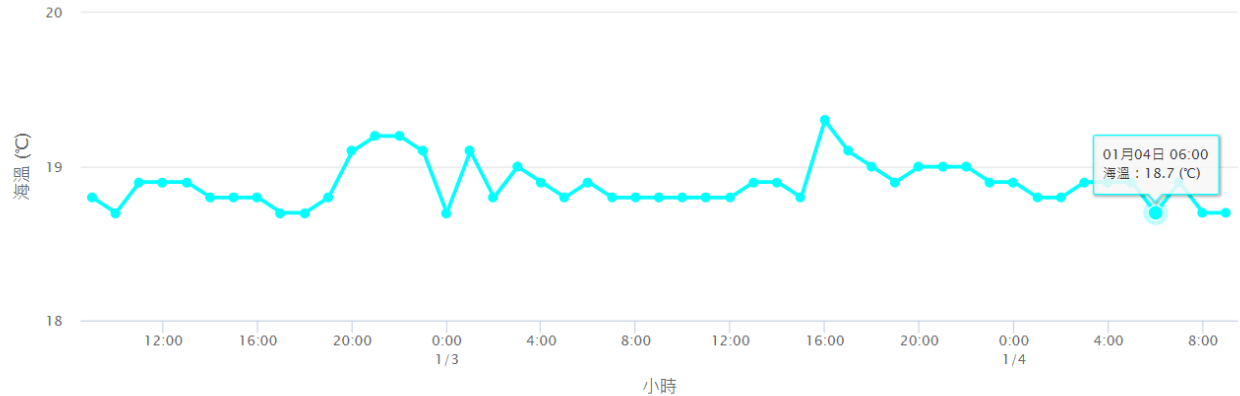
龜山島資料浮標海溫

2022-01-02 08:00 ~ 2022-01-04 08:00



龍洞資料浮標海溫

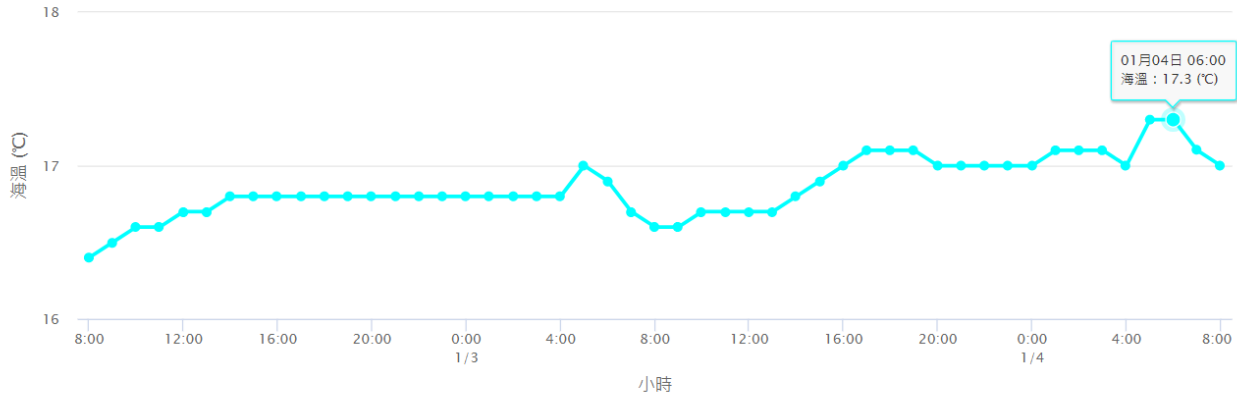
2022-01-02 09:00 ~ 2022-01-04 09:00





### 竹圍潮位站海溫

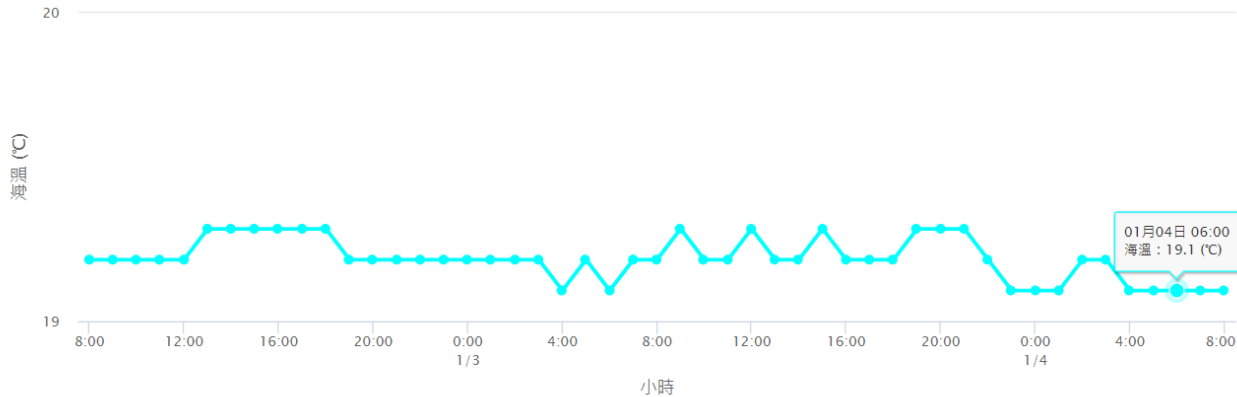
2022-01-02 08:00 ~ 2022-01-04 08:00



中央氣象局 製作

### 新竹資料浮標海溫

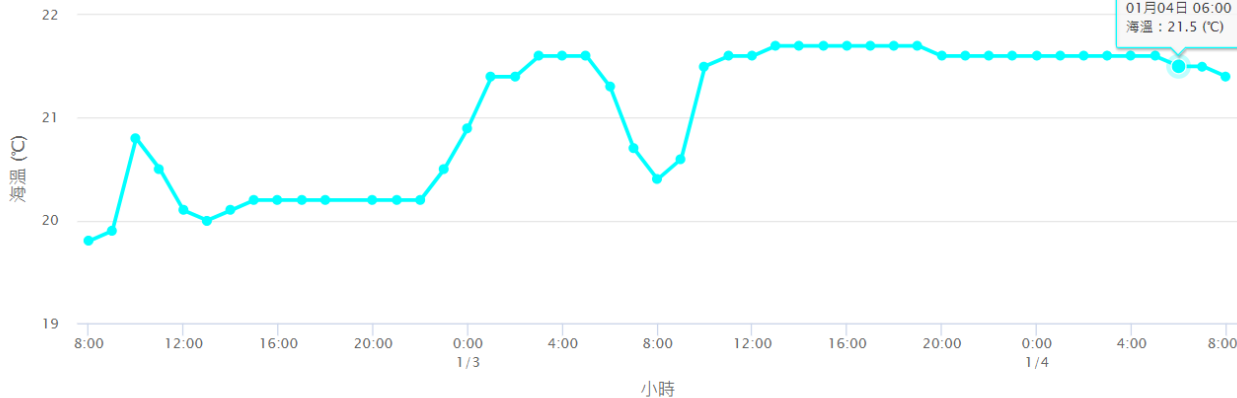
2022-01-02 08:00 ~ 2022-01-04 08:00



中央氣象局 製作

### 臺中資料浮標海溫

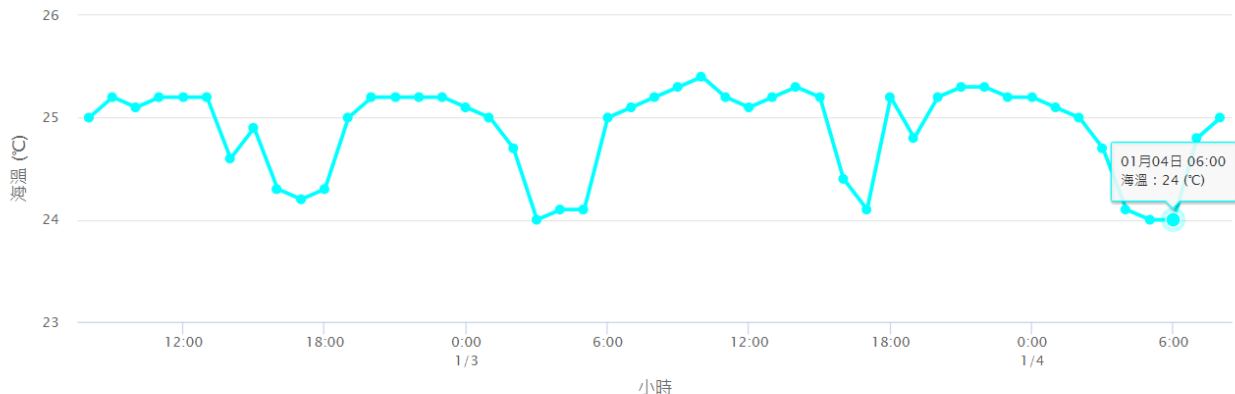
2022-01-02 08:00 ~ 2022-01-04 08:00



中央氣象局 製作

七美資料浮標海溫

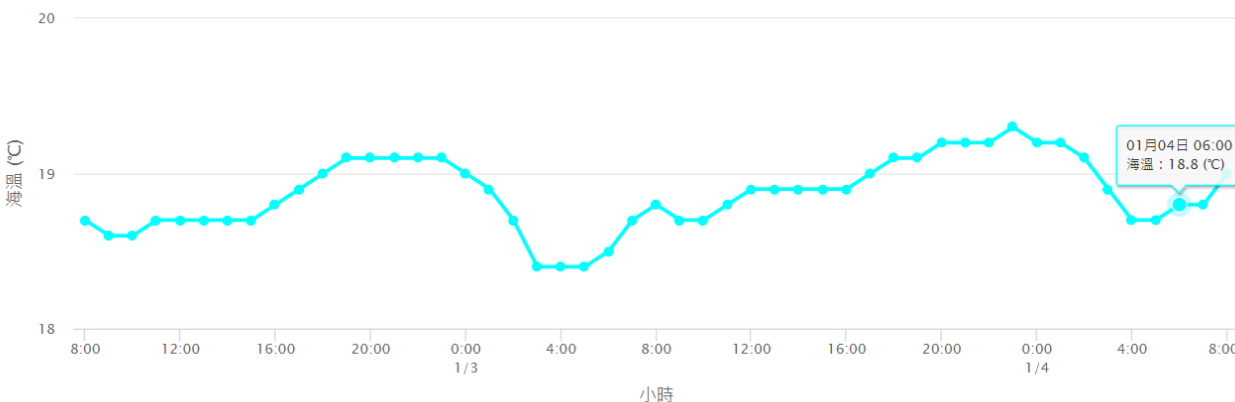
2022-01-02 08:00 ~ 2022-01-04 08:00



中央氣象局 製作

箔子寮潮位站海溫

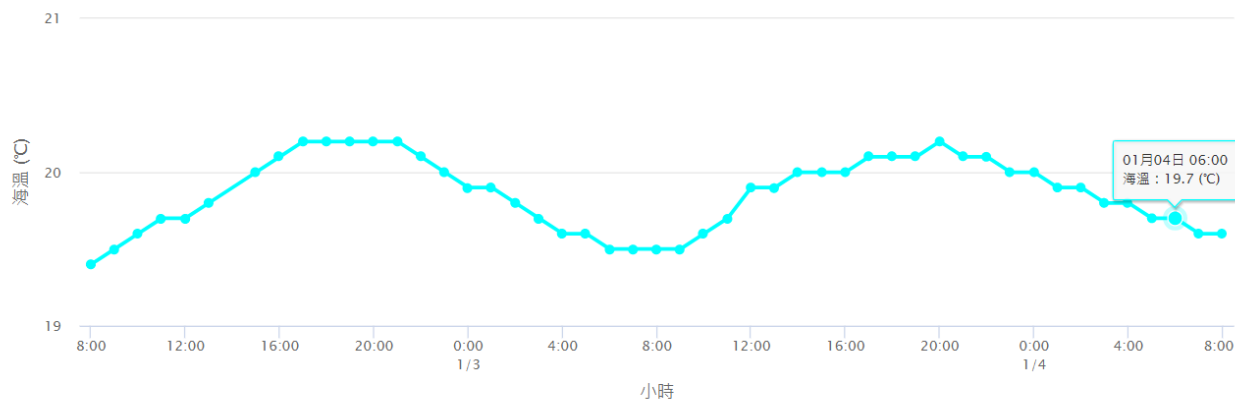
2022-01-02 08:00 ~ 2022-01-04 08:00



中央氣象局 製作

將軍潮位站海溫

2022-01-02 08:00 ~ 2022-01-04 08:00



中央氣象局 製作